

Mortality Composting Educational Resources: teaching the benefits to producers



Thomas Bass
Livestock Environment Associate Specialist
Animal and Range Sciences Dept.
tbass@montana.edu
406.994.5733



Mortality Composting

Learning through Demonstration

- This simple practice is taught effectively through:
 - Demonstrations and field days
 - Workshops
 - Video clips
 - Regionally relevant Extension resources



Mortality Composting

Summary: Selling Points

- Little to no odor
- Reduced scavenger/predator attraction
- May be done with existing equipment
- Reduced labor over burial



Mortality Composting

Summary: Selling Points

- Catastrophic mortality can be managed with composting
- Range mortalities composted in place
- May be ideal for small acreages
- Lowers risk of disease transmission



Mortality Composting

Summary: Reality Check

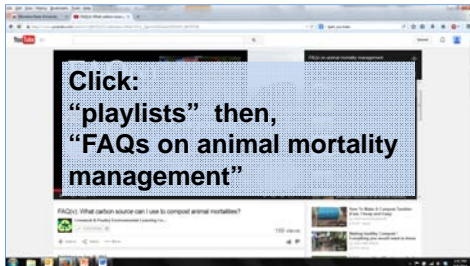
- Requires carbon source; some are better than others
- Low management; but, not management free
- Cause of mortality could limit use
- Limited land-application potential
- Provide the facts, let the producer decide



Mortality Composting




LPELC Videos!

- Mortality Videos on You Tube:
– <https://www.youtube.com/user/lpelc>



LPELC Pages




- 2013 Waste-to-Worth Proceedings (Mortality)
 - Bass: <http://www.extension.org/67616>
 - Bonhotal: <http://www.extension.org/67572>
 - Payne: <http://www.extension.org/67671>
- 2010 – Mortality Webcast:
 - <http://www.extension.org/pages/28022/livestock-and-poultry-mortality-composting>



Mortality Composting

Partner Websites:

- CSU (Four State Project) Mortality Composting
 - <http://www.ext.colostate.edu/pubs/ag/animal-compost.htm>
- Cornell Waste Management Institute
 - <http://cwmi.css.cornell.edu/mortality.htm>



Mortality Composting
